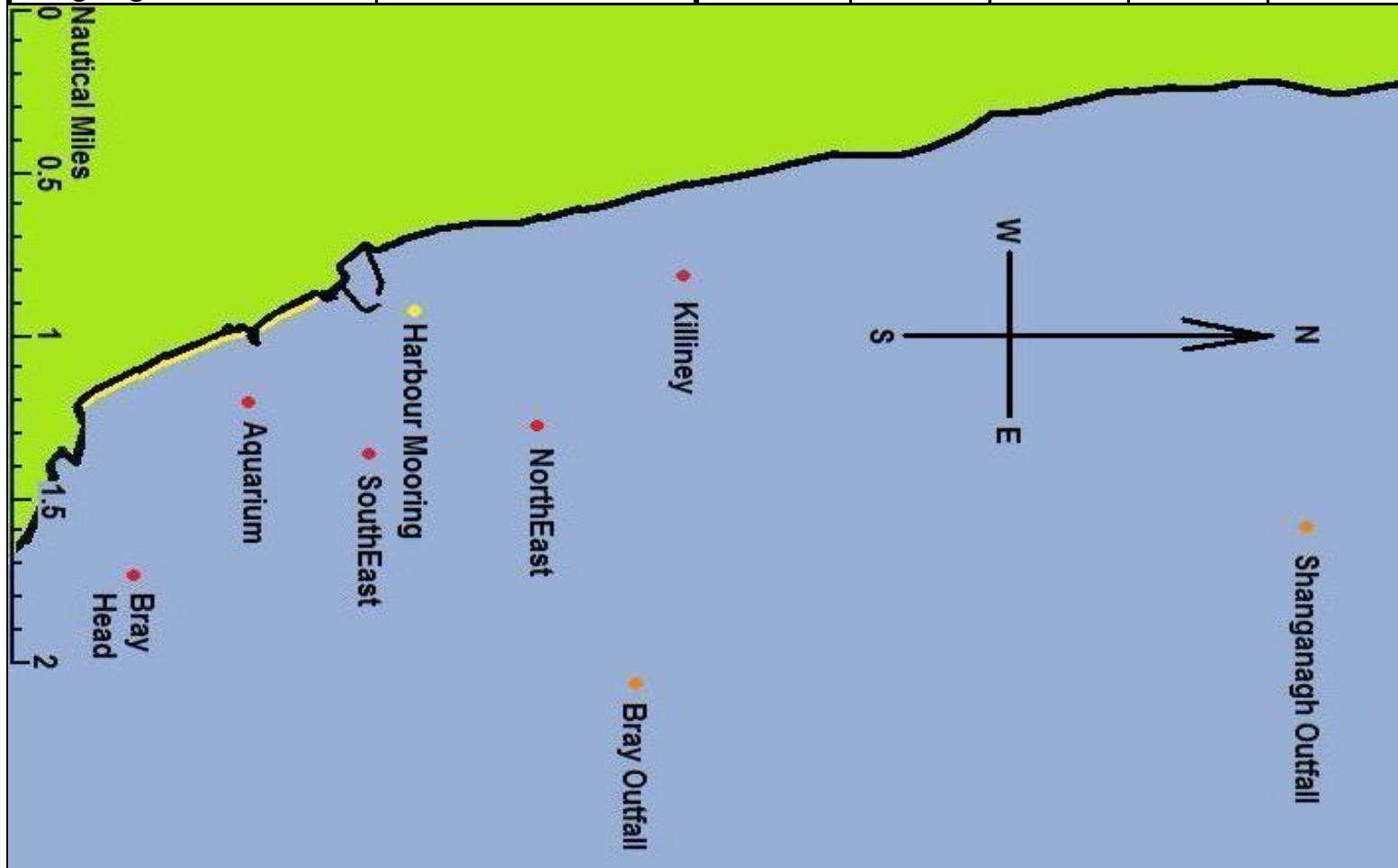


From this mark		Bearing (°True) and Distance (Nautical Miles) to this mark								14 April 2015
Name	Position (WGS84)	Aquarium	Harbour: End of South Wall	Bray Head	Killiney	North East	Bray Outfall	South East	Shanganagh Outfall	
Aquarium	N53°12.220 W06°05.589	-	329°T 0.40	131°T 0.44	346°T 1.13	004°T 0.75	031°T 1.21	021°T 0.32	006°T 2.69	
Harbour: End of South Wall	N53°12.561 W06°05.928	149°T 0.40	-	139°T 0.83	355°T 0.76	032°T 0.47	050°T 1.08	097°T 0.32	011°T 2.38	
Bray Head	N53°11.933 W06°05.031	311°T 0.44	319°T 0.83	-	336°T 1.51	344°T 1.07	013°T 1.35	340°T 0.63	359°T 2.96	
Killiney	N53°13.317 W06°06.049	166°T 1.13	175°T 0.76	156°T 1.51	-	138°T 0.48	095°T 0.91	154°T 0.88	019°T 1.66	
NorthEast	N53°12.964 W06°05.511	184°T 0.75	212°T 0.47	164°T 1.07	318°T 0.48	-	063°T 0.65	171°T 0.45	006°T 1.94	
Bray Outfall	N53°13.254 W06°04.540	211°T 1.21	230°T 1.08	193°T 1.35	275°T 0.91	243°T 0.65	-	215°T 0.89	347°T 1.68	
SouthEast	N53°12.524 W06°05.399	201°T 0.32	277°T 0.32	160°T 0.63	334°T 0.88	351°T 0.45	035°T 0.89	-	004°T 2.37	
Shanganagh Outfall	N53°14.892 W06°05.154	186°T 2.69	191°T 2.38	179°T 2.96	199°T 1.66	186°T 1.94	167°T 1.68	184°T 2.37	-	



Note: Add 3.5° to convert from °T (degrees True) to °M (degrees Magnetic) for the Irish Sea off Dublin and Wicklow (2015)

Bray Sailing Marks Chartlet